

NC PROTECT™

CONNECTOR FOR JANUSSEAL DOCUMENTS

Janusseal

Documents

Executive Summary

archTIS has partnered with Janusnet, a global leader in data classification, to offer robust classification and dynamic data protection for joint Defense and industry customers looking to implement data-centric zero trust security to protect sensitive information.

Janusnet's Janusseal Documents provides comprehensive, practical, cost-effective data classification and tagging capabilities for government and industry. archTIS' NC Protect solution offers dynamic attribute-based access control (ABAC) policies to control access and apply data protection to Microsoft application data and other file types.

Joint customers can now use Janusseal's robust classification capabilities and pair them with NC Protect's dynamic access and data-centric protection policies to safeguard sensitive data.

Integration Benefits

- Classify data based on multiple dimensions of sensitivity and dissemination.
- Add ABAC-based policies to restrict access and protect data based on its classification.
- Assists with global regulatory compliance requirements for data classification and protection such as:
 - US CMMC / CUI
 - US NIST
 - Australia's PSPF
 - UK's GSCP
 - Regional data privacy regulations, and more.

FLEXIBLE CLASSIFICATION & DATA PROTECTION FOR MICROSOFT APPLICATIONS

Organizations today have invested in technologies to help manage sensitive information in their Microsoft applications. IT and security teams are looking for ways to add data-centric ABAC capabilities that can support a modern zero trust approach without sacrificing existing technology investments and classification processes.

The integration between NC Protect and Janusseal Documents allows joint customers to enhance sensitive data labeling capabilities with dynamic access and protection to meet government, defence and enterprise needs.

The NC Protect Janusseal Connector provides organizations using Janusseal Documents with the ability to:

- Control access to data based on the file's classification.
- Add dynamic data protection policies to restrict the usage and sharing of sensitive files based on their classification.
- Add CUI categories and limited dissemination controls to documents and files.
- Offers the flexibility of a Bring Your Own Classification (BYOC) model to enhance existing processes.

TAKE CONTROL OF YOUR SENSITIVE DATA WITH NC PROTECT AND JANUSSEAL DOCUMENTS

Combining the rich metadata embedded by Janusseal Documents with NC Protect's ABAC capabilities delivers customers an outstanding solution to meet complex regulatory and security requirements for appropriately handling unstructured data.

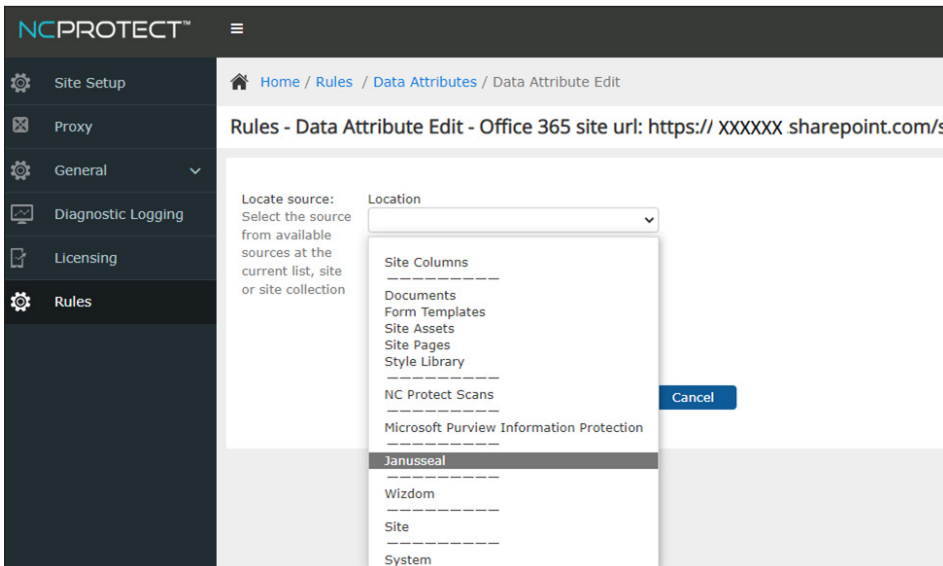
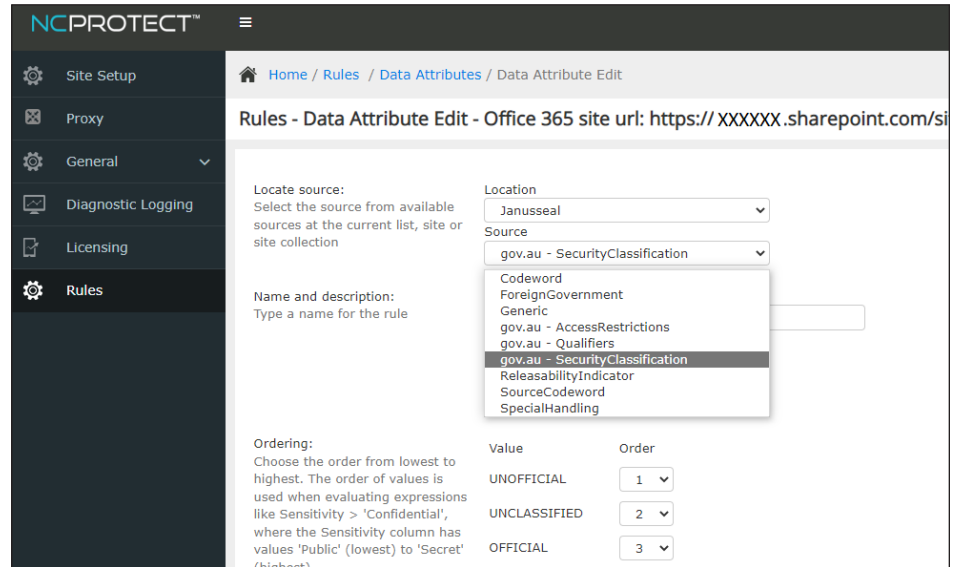
Janusseal's comprehensive classification metadata can be used by NC Protect in combination with user and security attributes, to seamlessly apply dynamic ABAC policies to prevent unauthorized access to information on a per-file basis, as well as apply unique data protection capabilities. NC Protect adds additional security capabilities including dynamic watermarks, CUI markings, secure read-only access, and more based on the file's sensitivity and the user's context at the time of access.

The Janusseal Documents integration is part of NC Protect's 'bring your own classification' model. It allows customers to use NC Protect's classification engine, leverage existing classifications, or a combination of the two, as part of the attributes used for enacting the product's dynamic ABAC policies. NC Protect's ABAC policies evaluate attributes including document, user and environment values against defined policies to control who can access information and under what conditions.

The integration between Janusseal Documents and NC Protect supports fine-grain ABAC-enabled access and data protection capabilities across Microsoft 365 applications, SharePoint on-premises and file shares.

EASILY CONNECT AND USE JANUSSEAL CLASSIFICATIONS IN NC PROTECT'S DYNAMIC ACCESS AND CLASSIFICATION POLICIES

Right: The NC Protect Janusseal Connector API seamlessly connects the two products so Janusseal Document classifications can be ingested and used by NC Protect.



Left: Once connected, NC Protect can use all dimensions of Janusseal classifications as one of the many data attribute types used when building and applying dynamic access and protection policies.

SUPPORTS THESE APPLICATIONS



SharePoint Online & On-Premises



Microsoft Teams



OneDrive



Office 365



File Shares



archTIS.com | info@archtis.com



janusnet.com | info@janusnet.com

